

HANDHELD TRANSIT-TIME FLOWMETER



Flexible and easy to use flow meter

Handheld Transit-time Flowmeter

General

The Handheld Transit-time Ultrasonic Flowmeter works on the transit-time method.

The clamp-on ultrasonic transducers (sensors) are mounted on the external surface of the pipe for non-invasive and non-intrusive flow measurement of liquid in fully filled pipe. Two pairs of transducers are sufficient to cover the most common pipe diameter ranges. In addition, its optional thermal energy measurement capability makes it possible to carry out a complete analysis of thermal energy usage in any facility.

The Insertion ultrasonic transducers (sensors) is hot-tapped mounting, there is no ultrasonic compound and coupling problem; Even though the transducers are inserted into pipe wall, they do not intrude into the flow, thus, do not generate disturbance or pressure drop to the flow. The insertion (wetted) type has the advantage of long-term stability and better accuracy.

This flexible and easy to use flow meter is the ideal tool for the support of service and maintenance activities. It can also be used for the control or even for the temporary replacement of permanently installed meters.

General

- Service and maintenance
- Replacement of defective devices
- Support of commissioning process and installation
- Performance & efficiency measurement
 - Evaluation and assessments
 - Capacity measurement of pumps
 - Monitoring of regulating valves
- Energy efficiency audits

Water and waste water industry - hot water, cooling water, potable water, sea water, etc

Petrochemical industry

Chemical industry -chlorine, alcohol, acids, thermal oils, etc

Refrigeration and air conditioning systems

Food, beverage and pharmaceutical industry

Power supply- nuclear power plants, thermal & hydropower plants, heat energy boiler feed water, etc

Metallurgy & mining applications

Mechanical engineering and plant engineering pipeline leak detection, inspection, tracking and collection.



Water & Waste Water



HVAC



Building



Petrochemical Industry

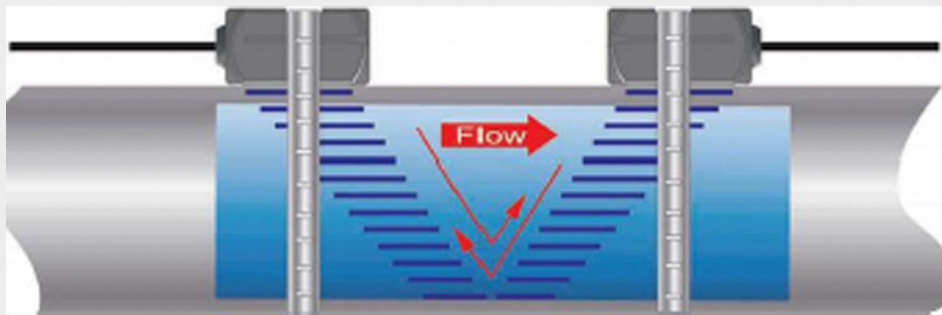


Metallurgy & Mining

Principle of Measurement

The Transit Time Difference Correlation Principle makes use of the fact that the time-of-flight of an ultrasonic signal is affected by the flow velocity of the carrier medium. Like a swimmer working his way across a flowing river, an ultrasonic signal travels slower upstream than downstream.

Our TF1100 ultrasonic flow meters work according to this transit-time principle:



$$V_f = Kdt/TL$$

Where:

V_f : Flow velocity

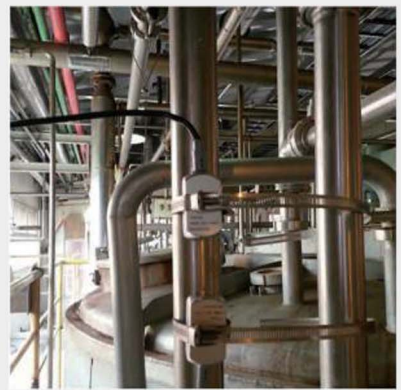
K: Constant

dt: Difference in time of flight

TL: Average Transit Time

When the flow meter works, the two transducers transmit and receive ultrasonic signals amplified by multi beam which travels firstly downstream and then upstream. Because ultra sound travels faster downstream than upstream there will be a difference of time of flight (dt). When the flow is still, the time difference (dt) is zero. Therefore, as long as we know the time of flight both downstream and upstream, we can work out the time difference, and then the flow velocity (V_f) via the following formula.

Application Pictures:





Features:

- 14 hours battery (rechargeable), back-lit 4 lines display.
- Data logger function.
- Can be used for mobile measurement, flow rate calibration, data comparing, meters running status checking.
- Non-invasive transducers.
- Wide bi-directional flow range of 0.01 m/s to 12 m/s. Wide liquid temperature range: -35°C-200°C.
- Works reliably in both clean and somewhat dirty liquids with turbidity < 10000ppm.
- Lightweight and easily transportable in box.

Specifications:

Transmitter:

Measurement principle	Ultrasonic transit-time difference correlation principle
Flow velocity range	0.01 to 12 m/s, bi-directional
Resolution	0.25mm/s
Repeatability	0.2% of reading
Accuracy	±1.0% of reading at rates >0.3 m/s);±0.003 m/s of reading at rates<0.3 m/s
Resonse time	0.5s
Sensitivity	0.003m/s
Damping of displayed value	0-99s(selectable by user)
Liquid Types Supported	both clean and somewhat dirty liquids with turbidity <10000 ppm
Power Supply	AC: 85-265V Up to 14 h with fully charged internal batteries
Enclosure type	Handheld
Degree of protection	IP65 according to EN60529
Operating temperature	-20C to +60C
Housing material	ABS
Display	4 line×16 English letters LCD graphic display, backlit
Units	User Configured (English and Metric)
Rate	Rate and Velocity Display
Totalized	gallons, ft ³ , barrels, lbs, liters, m ³ ,kg
Communication	RS232, Data Logger
Security	Keypad lockout, system lockout
Size	212*100*36mm case:410X320X80mm
Weight	0.5kg

Transducer:

Degree of protection	IP65 according to EN60529.(IP67 or IP68 Upon request)
Suited Liquid Temperature	Std. Temp.: -35C~85C High Temp.: -35C~200C
Pipe diameter range	DN20-50mm for type S and B, DN40-5000 for type M and A
Transducer Size	Type S 48(h)*28(w)*28(d)mm Type M 60(h)*34(w)*32(d)mm Type B 40(h)*24(w)*22(d)mm Type A 46(h)*31(w)*28(d)mm
Material of transducer	Aluminum for standard temp. sensor, and peek for high temp. sensor
Cable Length	Std: 5m

Configuration Code:

Transit-time Handheld Flowmeter

Power supply

A 85-265VAC

Output Selection 1

N N/A

2 RS232 Output

3 Data storage function

Output Selection 2

Same as above

Transducer Type

S DN20-50 - 35-85C

M DN40-5000 - 35-85C

B DN20-50 -35-200C

A DN40-5000 -35-200C

Transducer Rail

N None

RS DN20-50

RM DN40-600 (For larger pipe size, pls contact us.)

Pipeline Diameter

DNX e.g.DN50—50mm, DN4500—4500mm

Cable length

5m 5m (standard 5m)

Xm Common cable Max 300m(standard 5m)

XmH High temp. cable Max 300m

Transit-time Flowmeter -A -2/LTCH -M -N -DN100 -5m (example configuration)

Description:

Power supply: 85-265VAC; output: RS232; transducer type: M for DN40-5000 -35-85C without transducer rails; without PT1000 temperature sensor; DN100 application; 5m transducer cables.

Dill-Tech



Distributor of Subsurface Detection System and Utility Instruments

www.dill-tech.com.au
Email: sales@dill-tech.com.au
Phone: (+61) 0407 425 315